

IXTAR[®]

The professional automotive
washing solution



PRODUCTS CATALOGUE

EDITORIAL

THE IXTAR RANGE HAS BEEN
SPECIALLY DESIGNED AND DEVELOPED
FOR THE AUTOMOTIVE PROFESSIONAL.

IT IS COMPRISED OF EFFECTIVE PRODUCTS
PROVIDING A HIGH LEVEL OF PRODUCTIVITY.

FROM THE DESIGN TO THE MARKETING
OF OUR PRODUCTS, OUR AMBITION
IS TO OFFER WASHING SOLUTIONS ABLE
TO MEET YOUR MOST DEMANDING NEEDS.

TO DO SO, OUR FINAL VALIDATION PROCESS
SYSTEMATICALLY INCLUDES TESTS CARRIED OUT
BY PROFESSIONALS IN ACTUAL
CONDITIONS OF USE.

OUR 15 YEARS OF EXPERIENCE
IN AUTOMOTIVE WASHING AND OUR CAPACITY
FOR INNOVATION ARE KEY STRENGTHS
ALLOWING US TO OFFER YOU
A FULL WASHING RANGE, CONTINUOUSLY
ENRICHED AND RENEWED TO CATER
FOR YOUR CHANGING NEEDS.

THE IXTAR TEAM

CONTENTS

01
WASHING

p. 4

02
PASSENGER
COMPARTMENT
CLEANING

p. 6

03
FINISHING

p. 7

04
CAR WASH

p. 8

05
EQUIPMENT

p. 9

01



WASHING

Pre-Wash



INSECT REMOVER

VO

77 11 940 199 - 1L
77 11 940 200 - 5L

- Specific product to remove traces of insects on bodywork.
- New wetter formula, thus offering better hold on the vehicle.
- Ready to use.



TAR REMOVER

VO

77 11 237 751 - 5L

- Product designed to quickly dissolve traces of tar, grease, glue and resin from windows, bodywork, rocker panels and radiators.
- Ready to use.



GLUE RESIDUE REMOVER

VO

77 11 429 179 - 5L

- Product adapted to quickly dissolve glue residues (adhesive film, decorative sticker) on windows and bodywork.
- It is also suitable for dissolving the adhesive residue of the protective film of the running boards or the residual drops of copolymers that may persist after protection removal.
- Ready to use.



DECONTAMINANT

VO

77 11 780 871 - 20 L

- A product that removes pollution from catenary dust or metal oxides embedded in car bodies.
- Dilution of 5 to 50% depending on the difficulty of cleaning.



GEL ENGINE CLEANER

VO

77 11 229 281 - 1L

- The gel formula of the engine cleaner provides high adherence on all vertical surfaces.
- Its action will remove oils, grease and tar while helping with the cleaning of sooty deposits by cold dissolution and emulsification by rinsing in water.
- Ready to use.



ACTIVE PREWASH FOAM (HP)

VO

77 11 420 488 - 20 L

- Bodywork pre-wash product for high-pressure cleaning.
- Its action increases the contact of the cleaning solution through its creamy and adherent texture.
- 5% dilution.

VN Preparation



DEPROTECTOR

VN

77 11 944 097 - 20 L
77 11 230 196 - 200 L

- Deprotects bodywork covered by a copolymer film.
- Corresponds in particular to an industrial organisation.
- Concentrated product.
- 15% dilution.



Non-contractual photos

Washing



RIM CLEANER



77 11 943 150 - 1L
77 11 943 151 - 5L
77 11 943 152 - 20L

- The **ultra-powerful formulation** of the new ixtar rim cleaner will provide deep cleaning of steel and aluminium rims, even if extremely soiled.
- Its ease of use and its **power in removing layers** of brake dust make this new rim cleaner one of the most **productive** on the market.
- 1L: RTU.
5L and 20L: 25% dilution.



MANUAL BODYWORK SHAMPOO



77 11 782 145 - 20L

- Concentrated bodywork cleaning product.
- Dilution: 5 %.
- Automatic dilution possible with the PRO4.



POWDER BODYWORK SHAMPOO



77 11 420 489 - 25 kg

- Specific washing powder for high-pressure cleaning.
- Fast, deep cleaning of dirt and grease.



HIGH-PRESSURE BODYWORK SHAMPOO



77 11 782 146 - 20L
77 11 782 147 - 200L

- Concentrated product for high-pressure cleaning of bodywork. Fast, deep cleaning of the most stubborn dirt.
- Can also be used for cleaning bodywork and rims or the engine.
- Engine dilution: 25%.
- Bodywork dilution: 10%.



CONTACTLESS DEGREASER (DCI)



77 11 944 220 - 20L
77 11 944 221 - 200L

- Contactless cleaner designed to remove road film and ensure a shine after washing.
- Ideal product for washing cars leaving the workshop.
- Dilution: 5 %.
- Better foam holding on the bodywork.
- Easier rinsing.
- 50% improved efficiency.

Drying

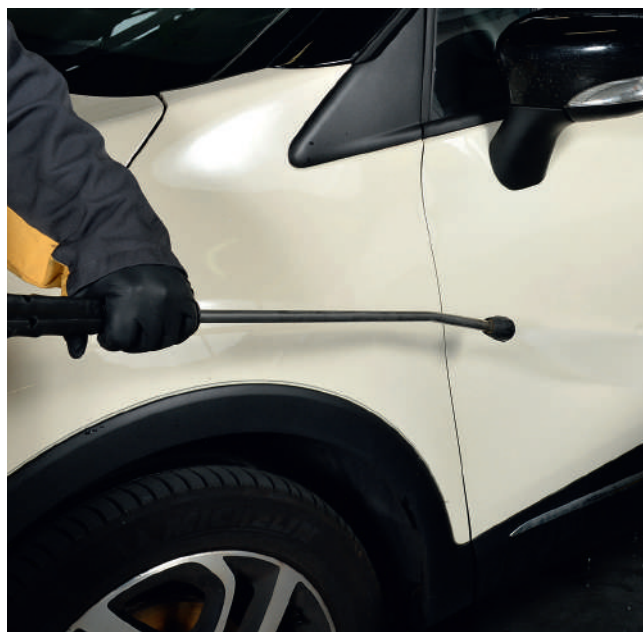


DRYING ACCELERATOR



77 11 575 063 - 5L

- Allows uniform drying, without residual marks.
- Without manual wiping.
- 1% dilution.



Non-contractual photos

02



PASSENGER COMPARTMENT CLEANING



INTERIOR CLEANER



77 11 943 144 - 1L
77 11 943 145 - 5L
77 11 943 146 - 20L

- Its new formula will quickly deep clean: carpets, fabrics, mats and all interior plastics.
- 1L: RTU. 5L and 20L: 15 % dilution.



SATIN FINISH PLASTIC RESTORER



77 11 419 586 - 1L
77 11 419 542 - 5L

- Restores satin-finish plastics to their original appearance, grease and mark free.
- Colourless, it provides dry and long-lasting protection.
- Silicon-free.
- Ready to use.



LEATHER CLEANER



77 11 942 313 - 750 ml

- Cleans, revives and nourishes leather.
- Silicon-free.
- Ready to use.



SHINY PLASTIC RESTORER



77 11 419 587 - 1L
77 11 419 543 - 5L

- This product enhances interior plastics by restoring their radiance.
- Recommended for VO renovation.
- Ready to use.



ODOUR DESTROYER



77 11 785 167 - 1L

- The odour destroyer does not merely mask unpleasant smells, but creates a positive and long-lasting olfactory atmosphere.
- Its technology will remove the most resistant odours (stale tobacco, animals or diesel) in the passenger compartment, carpets and mats.
- Ready to use.



MULTI-SURFACE DISINFECTANT



77 11 945 404 - 1L
77 11 945 405 - 5L

- Formula suitable for disinfecting surfaces and contact points.
- Eliminates viruses and bacteria.
- Ready to use.

Non-contractual photos

03

FINISHING



RUBBER RESTORER

VO VN

77 11 229 283 - 5 L

- This product makes rubber look like new.
- Ready to use.



ENGINE CAPSULE RESTORER

VO

77 11 780 524 - 5 L
77 11 780 525 - 20 L

- Removes grease, oil and tar marks.
- Restores the engine capsule and the hoses to their original appearance, grease and mark free.
- To be used on a cold engine.
- Ready to use.
- No rinsing required.



GLASS CLEANER

VO VN

77 11 943 147 - 1 L
77 11 943 148 - 5 L
77 11 943 149 - 20 L

- The new glass cleaner has been designed to achieve a perfect finish.
- Its new formula, rich in surfactants, evaporates fast and mark-free, thus making interior cleaning of the windscreen easier.
- Ready to use.

NEW

X-WAX

IXTAR BODYWORK PROTECTION SOLUTION

VO VN

Nowadays, vehicle paints are strongly attacked by different elements (pollution, UV, salt, mud, etc.).

By launching X-WAX, our goal is to keep vehicles bright over time.

77 11 945 798

1 treatment kit including:

- (1) - 1 treatment of 100 ml
- (2) - 1 thick microfibre 400 g/m²
- (3) - 1 flexible density sponge, 28 kg/m³



X-WAX increases the vehicle's shine and durability



Ready to use and safe to use



Polymer treatment for resistance to external deterioration



Fast application and perfect efficiency



Perfect for both new and used vehicles, this kit will make it easier to clean the bodywork with its water-repellent effect. Customer satisfaction guaranteed!



Non-contractual photos

04



CAR WASH

Prélavage



CAR WASH ACTIVE FOAM

77 11 420 484 - 20 L

- Pre-wash or washing product.
- Facilitates the soaking of muddy marks or insects and thus optimises washing efficiency.
- Scented and biodegradable.

Drying / Finishing



CAR WASH DRYING WAX

77 11 420 487 - 20 L

- Facilitates drying of D11 bodywork by dispersing the film of water after washing in car washes equipped with blowers.
- Scented and biodegradable.

Washing



CAR WASH BODYWORK SHAMPOO

77 11 420 485 - 20 L

- Concentrated product for quick and deep cleaning.
- Lubricates the brushes guaranteeing washing without micro-scratches.
- Scented and biodegradable.



PROTECTIVE CAR WASH WAX

77 11 420 486 - 20 L

- Used in multiprogram car washes, it is applied on the wet vehicle, forming a film over the entire bodywork. The protective film thus formed lasts for 6 weeks.
- This product is delicately scented and biodegradable.



Non-contractual photos



Dilution / Application

NEW



DOUBLE VENTURI SPRAYER KIT

77 11 943 292

Double venturi sprayer continuously diluting 2 products simultaneously. Thanks to its colour marks, selecting between "washing" and "drying" is simple.

- Venturi outlet via an integrated Gardena connector
- Venturi and valves of highly-resistant stainless steel, no clogging or blocking of the chemistry
- Venturi, hoses, pipes and strainers, universal and interchangeable with the 2 in 1 kit (77 11 425 923)



2 IN 1 SPRAY KIT + 15 M HOSE

77 11 429 928

Composition

- 77 11 425 923 - 2 in 1 spray kit
- 77 11 419 123 - 15 m cleaning pipe
- 77 11 780 916 - Valve
- 77 11 225 801 - Bleed plug
- 77 11 780 914 - Valve kit
- 77 11 172 330 - Handle
- 77 11 780 915 - Maintenance kit
- 77 11 172 334 - Flat jet nozzle

Optional extra:

Valve adapter: 77 11 237 748



PRO4 INNOVATION

77 11 782 045

- The ideal and economical dilution solution. The automatic dilution system provides efficiency and ease of use for 4 essential workshop products. More economical, more practical and safer, the exclusivity of the PRO4 lies in its ease of use. The 4 hoses of the PRO4 are numbered. Simply insert the hose matching the product number in the container. The PRO4 is then ready to use in just 4 steps.



PRESSURISED SPRAYER

77 11 783 710

- Perfect for manual spraying, this product boasts a white polyethylene tank with a graduated gauge to 5L.
- It is extremely robust thanks to its reinforced hose.
- Supplied with a fabric strap and a fibreglass hose tube.



STEEL FOAM CANNON 24L

77 11 783 732

- The foam cannon is an ideal tool for applying wash foam or for spraying a product. Its steel design is suitable for intensive use.



WATER FOAM GUN

77 11 783 734

- The Water Foam Gun is ideal for shampoos thanks to its foamer lance and its integrated Venturi. It is specially designed to facilitate dilution thanks to its 14 colour nozzles. Versatile, it can also be used as a sprayer.
- The gun can be connected to a hose pipe using a "Gardena" type connector
- Maximum water pressure: 6 bars.



STANDARD SPRAY 1L

77 11 783 709

- This indispensable product is perfectly suited for spraying strippers and renovators.



PRESSURISED SPRAYER 1L

77 11 782 066 - 1L

77 11 782 602 - 5 spray kit + Colour rings

- With its high density plastic tank, equipped with a pump, safety valve and switch, this product is perfect for spraying in bursts or continuously thanks to its adjustable jet nozzle.



BRUSH HANDLE

77 11 783 713

- Perfectly suited for screw-in brushes, the handle with an anti-slip sheath with flow-through of water provides excellent grip.
- The handle has a shut-off valve and a threaded metal tip for a brush.
- Length: 1.80 metre (2 x 0.90 m).



TELESCOPIC BRUSH HANDLE

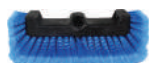
77 11 783 714

- Telescopic aluminium handle that is both practical and strong. Designed with flow-through of water, it is ideal for cleaning bodywork.
- The handle has a shut-off valve and a threaded metal tip for a brush.
- Length: 1.80 metre (2 x 0.90 m).

Non-contractual photos



Dilution / Application (continued)



3-SIDED SCREW-IN BRUSH

77 11 783 711

- Screw-in brush with 3 fibre sides.
- Length 25 cm.
- Cleans without scratches and prevents impacts thanks to its fibres on the sides.



4-SIDED SCREW-IN BRUSH

77 11 783 712

- Screw-in brush with 4 fibre sides.
- Length 25 cm.
- Cleans quickly and effectively without scratches.
- Covers 25% more cleaning surface.



2-RIB WHEEL RIM BRUSH

77 11 783 721

- Brush designed for deep cleaning of rims. Its 2 hoops give it greater rigidity to stop it from bending during use.
- Length: 26 cm.



WASHING MITT

77 11 783 725

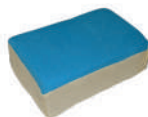
- Versatile, this washing mitt has a micro-chenille side and a microfibre side for washing and finishing.



COMPACT ABSORBENT SPONGE

77 11 783 728

- Vacuum packed to save space and storage.
- High absorbency.
- Dimensions: 21 x 12.5 x 7.5 cm.



DUO SPONGE

77 11 783 731

- The duo sponge is an indispensable asset for high-quality cleaning.
- 1 synthetic side and 1 chamois leather side, it cleans quickly and efficiently, for a mist-free result.



2 BRUSH PACK

77 11 783 723

- With their wooden handle and their natural bristles, these brushes are ideal for efficient cleaning of dashboards, vent grilles and wheel rims.



APPLICATION MICROFIBRE

77 11 782 071

- Ideal for applying all kinds of products for exterior and interior cleaning.
- Pack of 5 microfibres (3 green and 2 blue).
- Dimensions: 40 x 40 cm.
- Weight: 280 g/m².

Finishing

NEW



LAINE D'ACIER

77 11 943 361

- Ideal for efficient cleaning of headlights, windscreens, aluminium rims and car chrome.

NEW



SILK MICROFIBRE

77 11 943 360

- New microfiber perfectly suited for cleaning windows with no marks.



DRYER BLOW GUN

77 11 783 708

- This blow gun is particularly light and small, for ideal handling. It offers users a low noise level (<80 db) and functional features such as air pressure adjustment whilst guaranteeing good quality results.



BATCH OF 10 "REMOVES MARKS" SPONGES FOR BODYWORK

77 11 783 729

- Melamine foam sponge.
- Once wetted, the sponge efficiently ensures that streaks on bodywork or interior plastics will vanish.



CHAMOIS

77 11 783 717

- This new generation of embossed PVA makes drying twice as fast thanks to greater absorption.



POLISHING COTTON WOOL

77 11 421 701

- Ideal for high-quality polishing.



FLEXY SQUEEGEE

77 11 783 724

- This flexible silicon blade perfectly fits the shape of the surfaces to dry.



POLISHING CUFF

77 11 421 702

- Ideal for high-quality polishing.



MICROFIBRE FINISHING CLOTH

77 11 782 072

- Dimensions: 40 x 40 cm.
- Weight: 600 g/m².



HAND MOP

77 11 171 963
77 11 172 286 - NÉNETOL

- The hand mop captures and retains the dust while simultaneously polishing the bodywork and the dashboard.
- Nénetol: polishing liquid for the Hand Mop.



PACK OF 10 APPLICATION PADS

77 11 783 722

- Pad especially designed for applying plastic renovators, waxes and polishes.
- Dimensions: 14 x 7 x 3 cm.



Interior



INTERIOR MICROFIBRE

77 11 783 707

- This microfiber is used without any product to easily dust the interior while avoiding scratches and streaks.



2 BRUSH PACK

77 11 783 720

- The new generation of brushes has been redesigned to provide greater ergonomics in use and to considerably improve their efficiency, leaving no marks behind thanks to its new medium.



SPECIAL BRUSH FOR HAIR

77 11 425 584

- Ideally designed to remove animal hair, this brush will leave vehicle interiors spotless.



BLACK BALL BOOSTER

77 11 940 076

77 11 780 917 - 2 HOSE KIT

- The new technology of the Black Ball Booster, with a rotating flat head and ball bearings ensures effective and fast cleaning.
- Thanks to the high pressure injection of the product; the dirt is lifted off immediately. The gun allows you to manage your consumption of product thanks to the pressure adjustment of between 4 and 10 bars and the swivel air connector offers increased stability and the ability to lay the gun flat. It is also equipped with a removable brush for easy cleaning.
- New rubber handle for a better grip and insulation in the winter.



BLACK BALL EXTRACTOR

77 11 940 077

- The Extractor mounted on the Black Ball Booster provides the injector/extractor function. This function is used to remove and suck up dirt simultaneously. It thus offers optimum cleaning and drying of surfaces such as carpets, rugs and upholstery.
- The Extractor is fixed to a water/air suction device using one of the 4 adapters supplied.
- Strengthened in polypropylene opaque, the Extractor is highly shock-resistant.



Non-contractual photos

High-Pressure Cleaners

NEW



HIGH PRESSURE HOT WATER CLEANER - MH-3C

77 11 943 166

- This cleaner is specially designed for professional daily use and efficient high pressure washing with hot water.
- Power: 5 300 W. TRI 400 V / 50 Hz / 9 A.
- Heater: 55 000 W (80°C to 150°C max water temperature) at 92% of performance.
- Flow rate: 780 L/h.
- Weight: 119 kg.
- Dimensions: 101 x 70 x 102 cm.



HIGH-PRESSURE CLEANER

77 11 237 173

- This cleaner is specially designed for efficient daily use. Particularly robust, it has a 2-year warranty.
- Power: 1400 W.
- Max pressure: 120 bars.
- Flow rate: 440 L/h.
- Weight: 6.7 kg.



4 IN 1 HIGH PRESSURE CLEANER

77 11 782 189

77 11 782 471 - FOAM CANNON

- This cleaner is specially designed for efficient daily professional use.
- Power: 3,500 W.
- Max pressure: 150 bars.
- Flow rate: 660 L/h.
- Weight: 38 kg.
- Dimensions: 38 x 38 x 101 cm.

Aspirateurs



ATTIX VACUUM CLEANER

77 11 943 359

- Powerful water and dust vacuum cleaner offering automatic "infiniClean" unclogging.
- Perfectly suited for bodywork and paintwork thanks to its class M certification and its antistatic hose.
- High-Performance Bypass Motor with independent cooling (1400 W - 4500 L/min).
- Vacuum of 250 mbar).
- PTFE primary filter, anti-adherent and washable, class M (99.99% high efficiency).
- 42-litre tank in unbreakable polyethylene with safety stopper.
- Full tank water + dust level sensor with automatic cut-out of the motor.
- Weight: 16 kg.
- Cable: 7.5 m.
- Dimensions (L x W x H): 56 x 38 x 60 cm.



WATER AND DUST VACUUM CLEANER

77 11 782 188

77 11 782 473 - PACK OF 5 BAGS

77 11 782 472 - FILTER

- Water and dust Vacuum cleaner with semi-automatic "Push&Clean" unclogging system.
- Washable filter, class L certified (99.99% high efficiency).
- By-Pass Motor with independent cooling (1500 W - 3700 L/min).
- Vacuum of 235 mbar).
- 25-litre tank in unbreakable polyethylene.
- Weight: 9 kg.
- Cable: 5 m.
- Dimensions (L x W x H): 37 x 39 x 53 cm.



Sweepers and Scrubbers



SW250 SWEEPER

77 11 943 358

- The SW250 manual sweeper will quickly and efficiently sweep the workshop, the preparation area or the showroom.
- Its central brush and its two side brushes allow it to provide a sweeping capacity of over 3600m² an hour!
- Central V-shaped brush for efficient sweeping of large waste and dust
- Skirting strips integrated into the frame for improved capture of fine dust
- Total sweeping width: 920 mm
- Collection tank: 38 litres
- Weight: 20kg
- Dimensions (L x W x H): 147 x 92 x 112 cm.



SCRUBTEC 334C SCRUBBER

77 11 940 002

- Battery-powered scrubber, the SCRUBTEC 334C is ideal for cluttered surfaces and saves time by washing and sweeping in a single pass.
- "One touch™" button to activate all the functions in a single touch.
- Two solution flow rates and a light to indicate a lack of water.
- Cleans and dries in both forward and reverse directions.
- Lithium battery with "Battery Management System» (BMS) technology.
- Weight: 25 kg.
- Dimensions (L x W x H): 63 x 42.5 x 40 cm (not including the handle).



SW750 SWEEPER

77 11 943 168

- The self-propelled SW750 sweeper is designed for sweeping large areas.
- Working speed: 4 km/h (self-propelled).
- Battery life: 1 hr 30 to 2hrs.
- Collection tank: 60L.
- Weight: 68 kg.
- Dimensions (L x W x H): 100 x 80 x 50 cm.



SCRUBTEC 344 SCRUBBER

77 11 940 003

- Battery-powered scrubber, the SCRUBTEC 344 is designed to clean large areas such as exhibition halls and workshops.
- Its 30-litre tanks and its battery offering 4hr of life allow the 344 to boast productivity that is among the best on the market in its category.
- Adjustment of the solution flow in 3 positions + stop.
- Dirty water tank with a large opening for fast cleaning.
- Touch controls for perfect ergonomics.
- Weight: 121 kg.
- Dimensions (L x W x H): 118 x 46 x 106 cm.

Accessories



RETRACTABLE UTILITY KNIFE

77 11 783 726

77 11 783 727 - BOX OF BLADES



BARREL PUMP

77 11 780 217

77 11 782 044 - 200 L ADAPTER

- The barrel pump is ideal for transferring liquid.
It is perfectly suited for detergent products.



TAPS FOR DRUMS - PACK OF 5

77 11 224 562

- Compatible with 5 and 10 L drums.



10 L BUCKET

77 11 783 733

- Adapts onto the mobile servant.



25 L BUCKET

77 11 947 956

Ideal for cleaning vehicles.

- 4 casters included.
- Cleaning grid for brushes, mops, pads.
- Dimensions (L x W x H): 48 x 23 x 24 cm.



PRESSURE REGULATOR

77 11 172 619



WINDOW SCRAPER

77 11 783 715

77 11 783 716 - BOX OF BLADES



AUTOMATIC STAINLESS STEEL HOSE REEL

77 11 577 397

- 13 m pipe, supplied with a 2.5 m flexible connector.
- Withstands corrosion, bad weather and UV light.



FEEDER TANK CONNECTOR

77 11 425 583

- 3/4" female turning inlet/connector to facilitate installation.
- 3 3/4" male, independent outlets, with a tap directly integrated in the connector body for greater strength.

Non-contractual photos

Automotive washing professionals, discover a whole new range centred on your needs, thanks to products offering great productivity.

Yes, we've really thought of everything and particularly of you!

For more information, contact your ixtar sales advisor.

IXTAR[★]

Production: / M A K H E I A - June 2021 - 118149